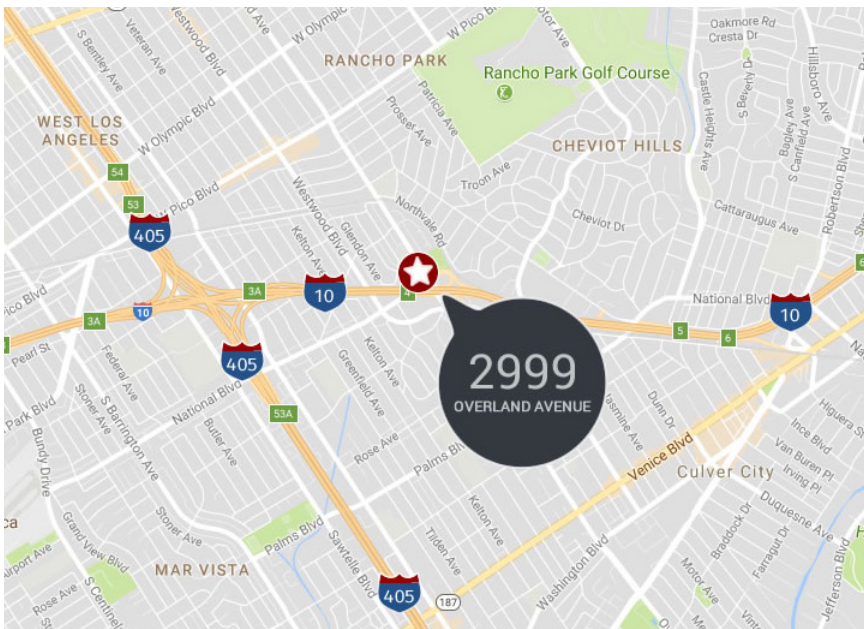
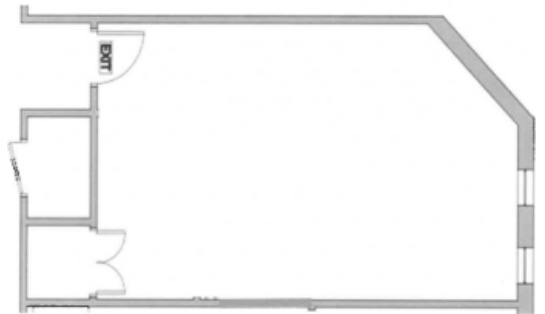


FOR LEASE

2999 OVERLAND AVENUE
LOS ANGELES, CA 90064



AVAILABLE SPACE	1st Floor: Approximately 550 rentable square feet. Open space with some windows.
RENTAL RATE	\$2.75 per rentable square foot, per month, full service gross (<i>plus annual increases</i>).
AVAILABILITY	Immediately.
PARKING	2.3 per 1,000 RSF at current building rates.



- » Outstanding freeway access.
- » Easy access to Downtown Los Angeles and West Los Angeles.
- » Subterranean parking.
- » Electric vehicle charging stations.

FOR MORE INFO, PLEASE CONTACT:

GUNTER PRENTNER
310.966.4348
prentner@westmac.com
DRE #00908753

©2019 WESTMAC Commercial Brokerage Company. All Rights Reserved. WESTMAC Commercial Brokerage fully supports the principles of the Equal Opportunity Act. WESTMAC Commercial Brokerage Company and the WESTMAC Commercial Brokerage Company logo are registered service marks owned by WESTMAC Commercial Brokerage Company and may not be reproduced by any means or in any form whatsoever without written permission.

WESTMAC Commercial Brokerage Company

1515 S Sepulveda Boulevard, Los Angeles, CA 90025 | Company DRE #01096973 | www.westmac.com

WESTMAC